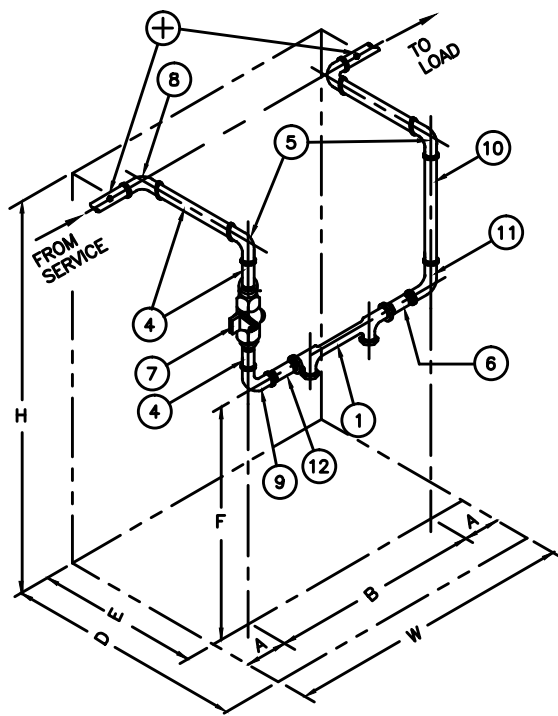


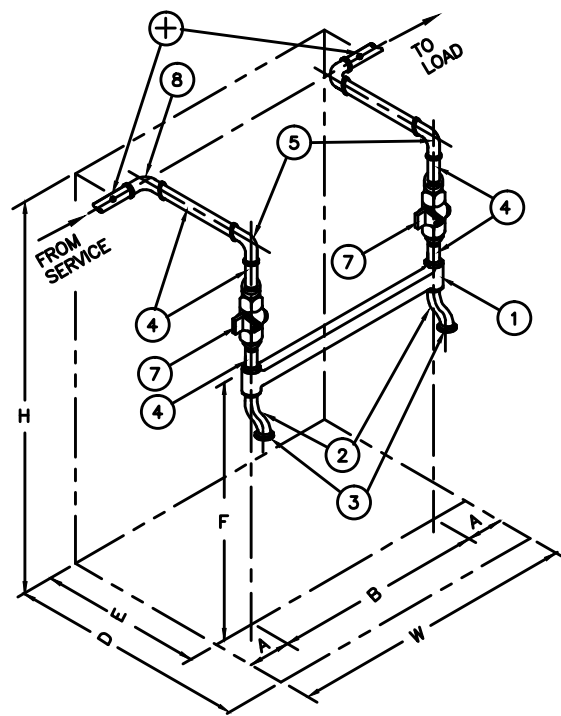
EO-7420-B

REVISIONS

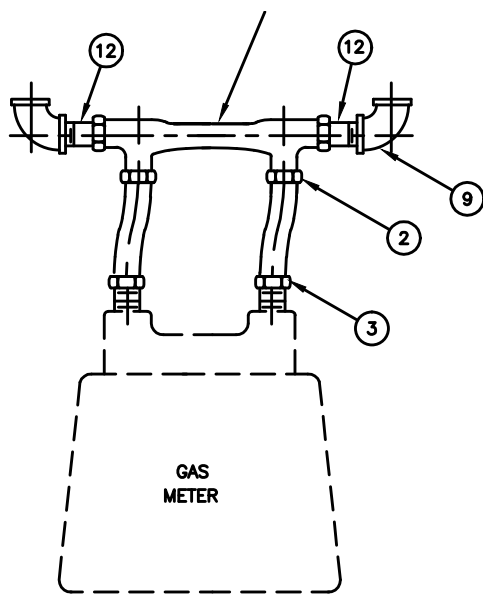
M.BALDOVIN	6/14/99	17
REDRAWN TO AUTOCAD TURN DWG. 90° C.W. 6/14/99		
G. LUDWIG	07/19/11	18
REPLACED MTR BAR FOR CLASS 250 TL METERS ADDED BYPASS BAR DETAIL AND REVISED BILL OF MATERIAL.		
H.T	07/13/11	
G. LUDWIG	12/16/15	19
DELETED DETAIL AND ASSOCIATED MATERIAL FOR CL 250 METER BAR. REVISED TITLE AND ADDED EFFECTIVE DATE.		
A.S.	12/10/15	



**CLASS 500 TC
W/CMC METER BAR**



**CLASS 1000 TC
DIAPHRAGM METERS**



DETAIL 'A'

**CLASS 500 TC ALTERNATE METER BAR
REQUIRING SWIVELS**

* SEE YELLOW BOOK

12	NIPPLE		1" x 2"	
11	ELBOW 90°		1 1/2" x 1 1/4"	
10	PIPE		1 1/2"	2"
9	ELBOW, 90°		1 1/2" x 1"	
8	ELBOW, 90°	REDUCING FROM SERVICE EXTENSION SIZE TO:	1 1/2"	2"
7	METER VALVE *		1 1/2"	2"
6	NIPPLE		1 1/4" x 2"	2" x 2 1/2"
5	ELBOW, 90°		1 1/2"	2"
4	NIPPLE		1 1/2"	2"
3	SWIVEL CAP *(NOT REQD. WITH CMC)		30LT	60LT
2	SWIVEL *(NOT REQD. WITH CMC)		1x 30LT	1 1/2" x 60LT
1	METER BAR*		CMC 1" x 1 1/4" X 30 LT	2" x 2" x 1 1/2"
		ALTERNATE	1" x 1" x 1"	
ITEM NO.	METER CLASS-- PROC. G-48		500 TC	1000 TC
	DESCRIPTION		SIZE	

NOTES:

- a- ALL MATERIAL SHALL BE FURNISHED AND INSTALLED BY CUSTOMER.
 - b- ALL PIPING SHALL BE INSTALLED PLUMB AND LEVEL.
 - c- ALL PIPE TO BE BLACK STEEL. ALL FITTINGS TO BE 150 LB. BLACK MALLEABLE IRON.
 - d- FOR LOW PRESSURE GAS SERVICE INSTALLATIONS, INSTALL AN INSULATED COMPRESSION COUPLING WITH A 1/8" THREADED PLUG NEAR THE HEAD OF SERVICE. *
 - e- PIPING MUST BE LEFT PLUGGED BY CONTRACTOR PRIOR TO METER INSTALLATION.
- +-- SUPPORT PIPING FROM WALL OR CEILING AT POINTS INDICATED.

BILL OF MATERIAL

H	HEIGHT (MIN.)	70"	70"
W	CLEARANCE LEFT TO RIGHT	43"	34"
D	CLEARANCE FOR WALL	52"	54"

MINIMUM SPACE REQUIRED

F	CL. OF METER BAR TO FLOOR (MAX.)	82"	82"
	CL. OF METER BAR TO FLOOR (MIN.)	50"	50"
E	CL. OF METER BAR OR ROTARY METER TO WALL	12"	12"
B	CL. TO CL. IN/ OUTLET PIPING	19"	10"
A	CLEARANCE FROM CL. OF PIPES	12"	12"
ITEM NO.	METER CLASS--PROC. G-48	500 TC	1000 TC

DIMENSIONS

EFFECTIVE DATE: FEB. 1 2016

**INSTALLATION OF CLASS 500TC
TO CLASS 1000TC
DIAPHRAGM GAS METERS INDOORS**

CONSOLIDATED EDISON COMPANY OF N.Y., INC.
GAS OPERATIONS DEPT.

DATE 5/12/49
LAST REV.12/16/15

SPEC. NO. **G-316**

REV. **19**

METERING SPECIFICATIONS AND PROCEDURES VOLUME NO.3 AND YELLOW BOOK.

MAILING LIST 3