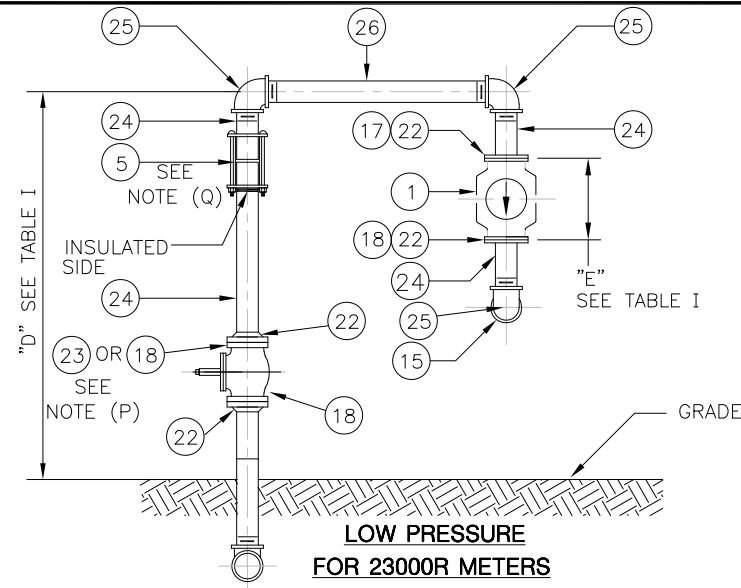


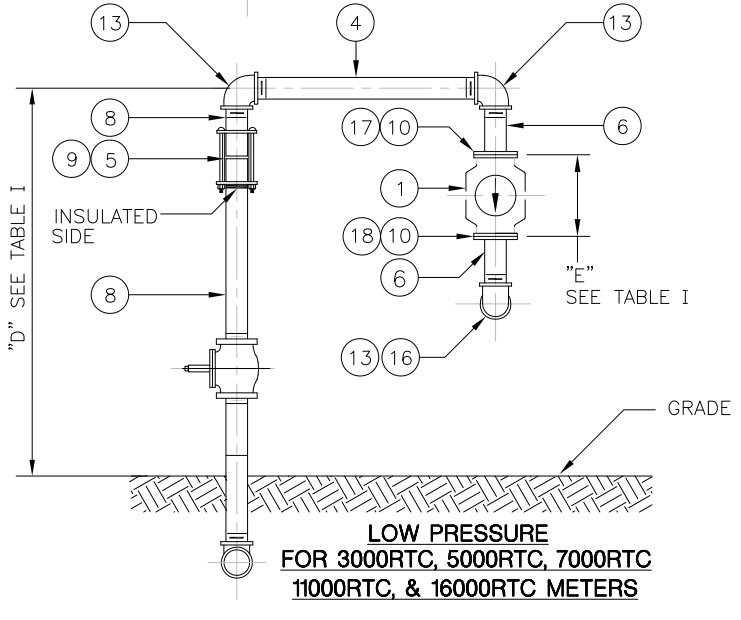
8-11691-03

REVISIONS

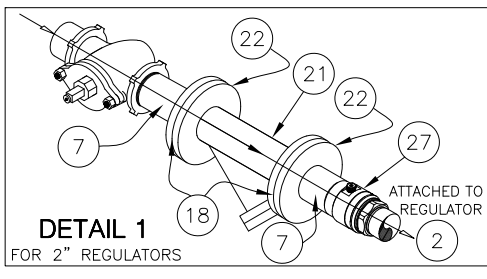
MARK BALDWIN 6/14/99	5	REDRAWN TO AUTOCAD CHG'D. TITLE, PRESSURE WEIGHT, TABLE IT ADDED NOTE h & i C.W. 6/21/99
D.MILES 5/19/06	6	UPDATED DWG., REVISED NOTES, SIZES, ON TABLE I "C" 3"-6", 3"-4" TO 3"-10" & F,G,H, RAJ. 4/27/06
K. LOOK 11/21/06	7	REVISED TABLE I FOR CLARITY ADDED 23M INFO REVISED TITLE
C.P. 11/21/06	8	REPLACED 23000RTC WITH 23000R FOR LOW PRESSURE INSTALLATIONS
M.SIMONE 9/1/09	9	ADDED ITEMS 17 & 18 AND NOTE L. REVISED NOTE K.
D.R.J. 8/24/09	10	DELETED DETAIL 'A'. ADDED REFERENCE TO DWG 502163 IN PLAN. CORRECTED DIMS. OF ITEM 4 IN BILL OF MAT'LS. ADDED NOTE M. ADDED REFERENCE TO YELLOW BOOK.
G. LUDWIG 3/1/12	11	ADDED DETAIL FOR 23000R METER. REVISED BILL OF MATERIAL. REVISED NOTE F; ADDED NOTES N, O, P, AND Q. REVISED DIM "D". DELETED ITEM 11 AND NOTE "E". ADDED START DATE FOR "Y" STRAINER INSTALLATION.
G. LUDWIG 5/22/14	12	REVISED ITEM #19
D.J. 6/27/14	13	REVISED TABLE I, REMOVED COLUMN C; ADJUSTED TABLE; REVISED NOTE M; REMOVED BUMPERS
G. LUDWIG 4/14/15	14	ADDED DETAIL 1 & DETAIL 2. ADDED ITEMS 27 & 28.
B.E. 3/10/15	15	REVERTED BACK TO REVISION NO. 13.
G. LUDWIG 5/30/17	16	ADDED DETAIL 1 & DETAIL 2. ADDED ITEMS 27, 28 & NOTES R AND S.
D.J. 5/30/17	17	DELETED ITEM 27 ITEM 28 BECAME ITEM 27
G. LUDWIG 3/14/19	18	ADDED SIZES FOR ITEM 12 ITEM 16 DELETED 4"x3" DELETED DETAIL 2
D.O. 7/21/2020	19	REVISOR TO VALVE ITEM NUMBER ON ELEVATION DETAIL.
G. LUDWIG 4/13/2021	20	
D.O. 4/13/2021	21	
G. LUDWIG 08/17/2021	22	
D.O. 08/17/2021	23	
G. LUDWIG 06/29/2022	24	
D.O. 06/29/2022	25	
G. LUDWIG 01/13/2023	26	
D.J. 01/13/2023	27	
	28	
	29	
	30	
	31	
	32	
	33	
	34	
	35	
	36	
	37	
	38	
	39	
	40	
	41	
	42	
	43	
	44	
	45	
	46	
	47	
	48	
	49	
	50	
	51	
	52	
	53	
	54	
	55	
	56	
	57	
	58	
	59	
	60	
	61	
	62	
	63	
	64	
	65	
	66	
	67	
	68	
	69	
	70	
	71	
	72	
	73	
	74	
	75	
	76	
	77	
	78	
	79	
	80	
	81	
	82	
	83	
	84	
	85	
	86	
	87	
	88	
	89	
	90	
	91	
	92	
	93	
	94	
	95	
	96	
	97	
	98	
	99	
	100	



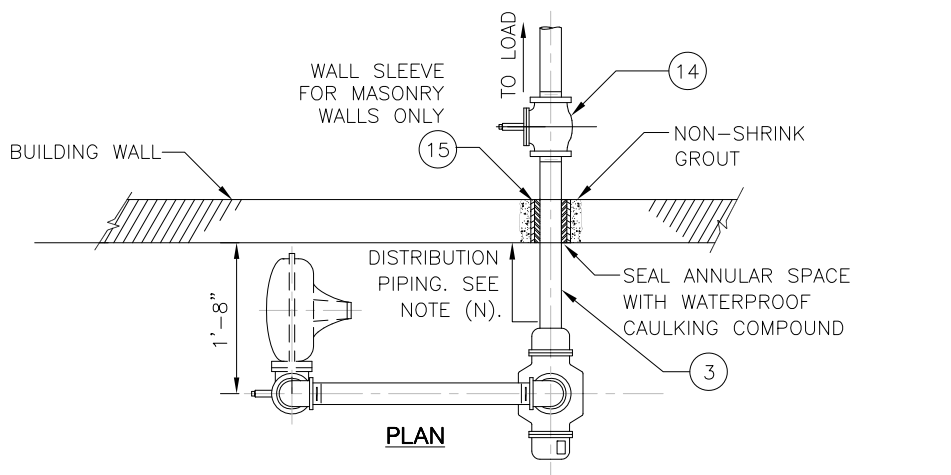
LOW PRESSURE FOR 23000R METERS



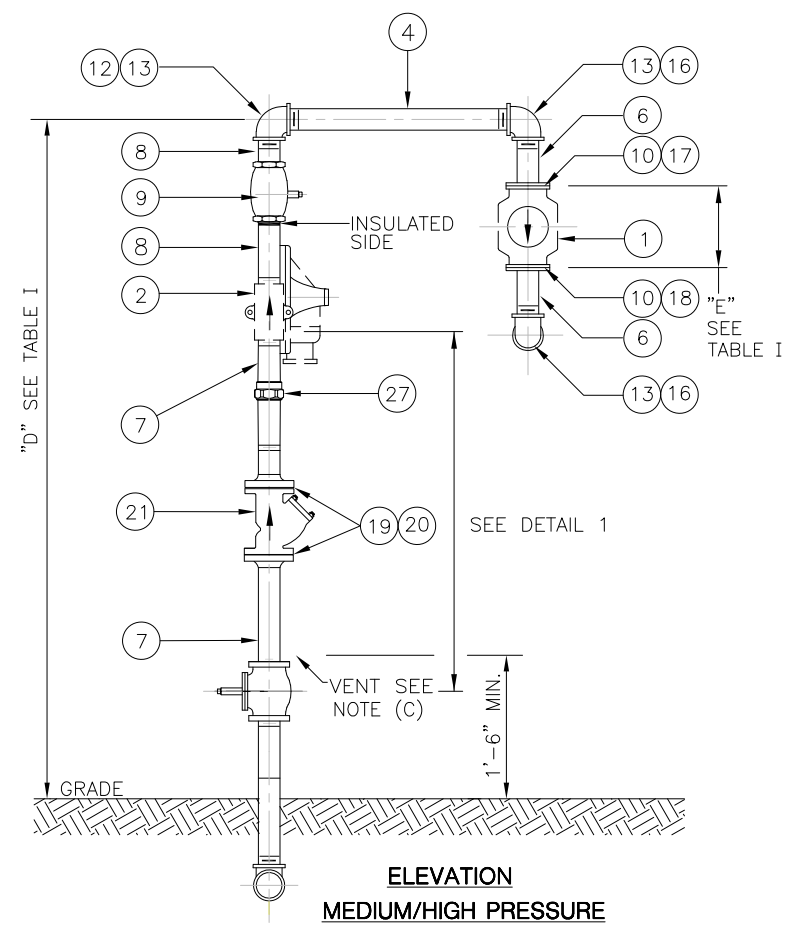
LOW PRESSURE FOR 3000RTC, 5000RTC, 7000RTC, 11000RTC, & 16000RTC METERS



DETAIL 1 FOR 2" REGULATORS



PLAN



ELEVATION MEDIUM/HIGH PRESSURE

BILL OF MATERIAL

ITEM NO.	DESCRIPTION	DWG. OR SPEC NO.	LOW PRESSURE INSTALLATION SIZE				HIGH PRESSURE INSTALLATION SIZE				
			3000RTC	5000RTC 7000RTC	11000RTC 16000RTC	23000R	3000RTC	5000RTC 7000RTC	11000RTC 16000RTC 23000RTC		
1	METER CLASS (ALL TC)	PROC. G-48									
2	GAS SERVICE REGULATOR										
3	PIPE, STEEL, SCH. 40 (THRD)		2"	3"	4"				2"x2 1/2"	2"x2 1/2"	2"x2 1/2"
4	PIPE, STEEL, SCH. 40 (THRD)		2"x20"	3"x20"	4"x20"				2"x20"	3"x20"	4"x20"
5	COMP. COUPLING INSULATED, BOLTED	*		3"	4"						
6	NIPPLE, STEEL, SCH. 40		2"x2 1/2"	3"x3"	4"x4"				2"x2 1/2"	3"x3"	4"x4"
7	NIPPLE, STEEL, SCH. 40								2"x5"	2"x5"	2"x5"
8	PIPE, STL, SCH. 40 (THRD ONE END)		2"	3"	4"				2"	2"	2"
9	COMP. CPLG. INS. W/ 1/8" PLUG	*	2"	3"	4"				2"	2"	2"
10	FLANGE, FORGED STL. FLAT FACE, THRD 150#.	ASME B16.5	2"	3"	4"				2"	3"	4"
11	(BLANK)										
12	ELBOW, 90° REDUCING, MALLEABLE IRON 150#.	ASME B16.3							2"x2"	3"x2"	4"x2"
13	ELBOW, 90° MALL. IRON 150#.	ASME B16.3	2"	3"	4"				2"	3"	4"
14	LUBRICATED PLUG CONVENIENCE VALVE INST. WHERE APPROPRIATE	*	2"	3"	4"				2"	3"	4"
15	WALL SLEEVE, SCH. 40 P.V.C. OR STEEL PIPE		4"	6"	6"	8"			4"	6"	6"
16	ELBOW, 90° REDUCING, MALLEABLE IRON 150 #	ASME B16.3									
17	1/16" 150 # FULL FACE GASKET STRAINER (SEE NOTE L)	G-8220	2"	3"	4"	6"			2"	3"	4"
18	1/16" 150 # FULL FACE GASKET (SEE NOTE L)		2"	3"	4"	6"			2"	3"	4"
19	FLANGE, FORGED STEEL, RAISED FACE, THRD, 150 #	ASME B16.5							2"	2"	2"
20	GASKET, RING, 150 #								2"	2"	2"
21	"Y" STRAINER, FLANGED, RAISED FACE, THRD, 150 #								2"	2"	2"
22	FLANGE, FORGED STEEL, FLAT FACE, WELD NECK, 150 #	ASME B16.5				6"					
23	FLANGE INSULATING KIT (SIZE TO MATCH VALVE FLANGE)	*				6"					
24	PIPE, STEEL, SCH 40, WELDED, LTH TO SUIT	G-8107				6"					
25	ELBOW, 90 DEG, STEEL, SCH 40, WELDED, 150 #	ASME B16.9				6"					
26	PIPE, STEEL, SCH 40, WELDED, 20" LG.	G-8107				6"					
27	2 INCH F X M NPT TA-VALVE (CLASS & STOCK # 3771917)								2"	2"	2"

* SEE YELLOW BOOK **NOTE: "Y" STRAINER REQUIRED AFTER JULY 1, 2015.**

INSTALLATION OF METER PIPING FOR CLASS 3000R-TC TO CLASS 23000R-TC ROTARY METERS - OUTDOORS

CONSOLIDATED EDISON COMPANY OF N.Y., INC.
GAS ENGINEERING DEPT.

DATE	10/23/1981	DWG.	EO-16511-B	REV.	18
LAST REV.	01/13/2023	NO			

- TABLE I**
- | METER CLASS | METER TYPE (TC OR TCID) | METER WEIGHT (LBS) | DIM. "D" | DIM. "E" |
|-------------|--------------------------------|--------------------|------------------|----------|
| 3000RTC | 3M175TC/RM3000TC | 28 | 42"
TO
70" | 6.75" |
| 5000RTC | 5M175TC/RM5000TC | 36 | | 6.75" |
| 7000RTC | 7M175TC/RM7000TC | 50 | | 9.5" |
| 11000RTC | 11M175TC/RM11000TC | 65 | | 9.5" |
| 16000RTC | 16M175TC/RM16000TC | 86 | | 9.5" |
| 23000RTC | RM23000TC (HIGH PRESSURE ONLY) | 84 | | 9.5" |
| 23000R | 23M175 (LOW PRESSURE ONLY) | 205 | | 16" |
- NOTES:**
- A - ALL PIPING SHALL BE INSTALLED PLUMB AND LEVEL.
 - B - ALL MATERIAL SHALL BE FURNISHED AND INSTALLED BY THE CUSTOMER EXCEPT FOR THE SERVICE REGULATOR WHICH SHALL BE FURNISHED BY THE COMPANY FOR INSTALLATION BY THE CUSTOMER AND THE METER AND GASKETS WHICH ARE FURNISHED AND INSTALLED BY THE COMPANY.
 - C - FOR VENT REQUIREMENTS REFER TO E0-17118
 - D - DO NOT INCLUDE THE REGULATOR IN ANY PIPING PRESSURE TEST.
 - E - (BLANK)
 - F - EXCEPT FOR WHERE A COMPRESSION COUPLING IS CALLED FOR ON THE DRAWING, ALL METER PIPING (PIPING FROM THE HEAD OF SERVICE VALVE TO METER OUTLET) GREATER THAN 4 INCHES IN DIAMETER SHALL BE BUTT WELDED. ELEVATED DELIVERY PRESSURE METER PIPING SHALL BE RADIOGRAPHED.
 - G - PIPING MUST BE LEFT BLANK BY CONTRACTOR PRIOR TO METER INSTALLATION.
 - H - INSTALLATIONS WITH VOLUME CORRECTOR MUST HAVE 24 INCHES MINIMUM CLEARANCE ON TOP OF METER PIPING.
 - I - FOR DOWNSTREAM PIPING BELOW GRADE REFER TO SPEC. G-8205
 - J - ALL PIPING AND FITTINGS SHALL BE PAINTED WITH PAINT SUITABLE FOR USE ON METAL SURFACES OUTDOORS.
 - K - INSTALL PIPE SUPPORTS AS NEEDED. REFER TO SPEC. G-695.
 - L - GASKET MATERIAL SHALL BE GARLOCK 3000 (1/16" THICK). GASKET STRAINER TO CONTAIN A 60 MESH STAINLESS STEEL SCREEN.
 - M - IF THERE IS ANY RISK OF VEHICLE DAMAGE. METER/REGULATOR BUMPERS SHALL BE INSTALLED IN ACCORDANCE WITH G-704
 - N - DISTRIBUTION PIPING EXCLUDING METER PIPING MUST MEET ALL WELDING SPECIAL INSPECTION, AND RADIOGRAPHY REQUIREMENTS OF NYC BUILDING CODE OR OTHER AUTHORITY HAVING JURISDICTION.
 - O - FOR CON EDISON LOW PRESSURE SYSTEMS, AN INSULATED COMPRESSION COUPLING OR FLANGE INSULATING KIT AS APPROPRIATE SHALL BE INSTALLED IMMEDIATELY DOWNSTREAM OF THE HEAD OF SERVICE VALVE. FOR CON EDISON MEDIUM AND HIGH PRESSURE SYSTEMS, AN INSULATED COMPRESSION COUPLING OR FLANGE INSULATING KIT SHALL BE INSTALLED IMMEDIATELY DOWNSTREAM OF THE REGULATOR.
 - P - FOR INSTALLATIONS HAVING BRANCH LINES THAT ARE SEPARATELY METERED AND/OR SEPARATELY REGULATED, REFER TO SPEC G-703 FOR PIPE SIZING REQUIREMENTS.
 - Q - INSTALL EITHER ITEM 5 OR ITEM 23.
 - R - INSTALL TA VALVE SUCH THAT FLOW ARROW ON THE DEVICE POINTS TO THE DIRECTION OF GAS FLOW.
 - S - HEAT SENSOR ON 2" MODEL SHOULD BE FREE OF ANY FORM OF COATING.