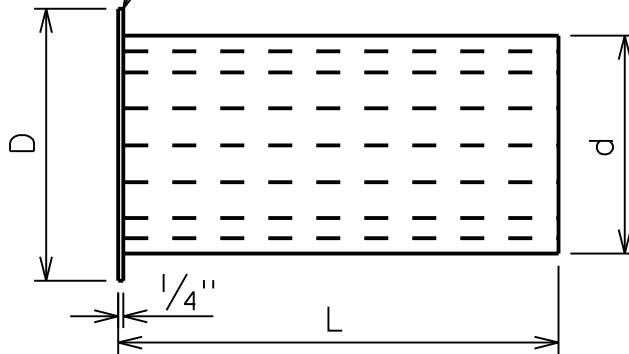
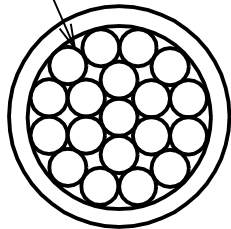


CONVERTED TO  
MICROSTATION,  
REVISED NOTES  
LRD(SEA) 01/20/06

7 TUBES FOR 2" SIZE.  
19 TUBES FOR ALL OTHER SIZES.  
WALL THICKNESS TO BE  
SPECIFIED BY VENDOR.

FLANGE TO BE WELDED  
TO TUBES AT ALL POINTS  
OF CONTACT



DIMENSION "d"  
TO FIT I.D. OF  
PIPE SPECIFIED  
IN TABLE

ALL DIMENSION IN INCHES

TABLE			
SIZE	d NOMINAL I.D. OF PIPE	L LENGTH	D FLANGE DIAMETER
2	1.939	6	3 <sup>5</sup> / <sub>8</sub>
3	3.068	9	5
4	4.026	10	6 <sup>3</sup> / <sub>16</sub>
6	6.065	12	8 <sup>1</sup> / <sub>2</sub>
8	7.981	16	10 <sup>5</sup> / <sub>8</sub>
10	10.020	20	12 <sup>3</sup> / <sub>4</sub>
12	12.000	24	15
16	15.250	32	18 <sup>1</sup> / <sub>2</sub>

NOTES:

1. MATERIALS:  
PLATE-ASTM A-240, TYPE 304 SEAMLESS  
PIPE OR TUBE-ASTM A-312, TYPE 304
2. USE FOR STEAM AT 200 PSIG AND 413°F.
3. DESIGNED, CONSTRUCTED, MANUFACTURED AND TESTED  
TO ASME STANDARD MFC-3M-1984 UNLESS OTHERWISE  
NOTED.
4. FLANGE RING TO BE CONSTRUCTED SO THAT IT CAN  
BE CLAMPED BETWEEN TWO PIPE LINE FLANGES.
5. EACH TUBE TO BE WELDED TO BUNDLE AT TANGENTIAL  
POINTS OF CONTACT AT EACH END.

APPROVED MANUFACTURERS:

DANIEL ORIFICE FITTING CO.  
PERRY EQUIPMENT ORIFICE FITTING CO.  
FLUIDIC TECH INC.

STRAIGHTENING VANES  
FOR USE WITH  
STEAM FLOW METER

CONSOLIDATED EDISON COMPANY OF N.Y., INC.  
STEAM DISTRIBUTION ENGINEERING

DATE 08-12-88  
LAST REV. 01-20-06

DWG.  
NO. S-464

REV.

2