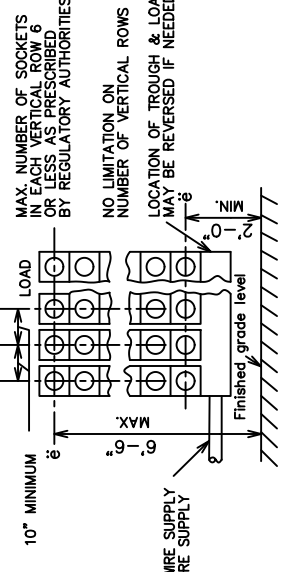
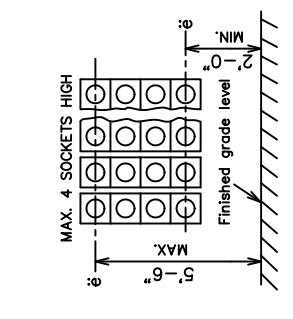
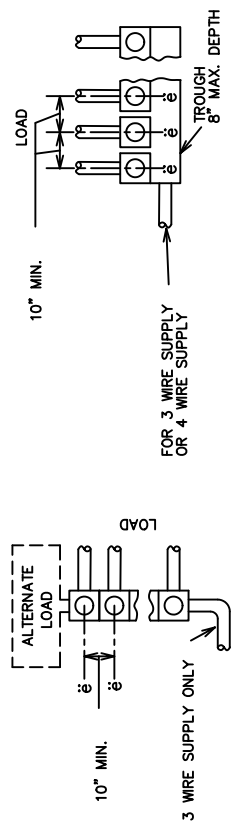


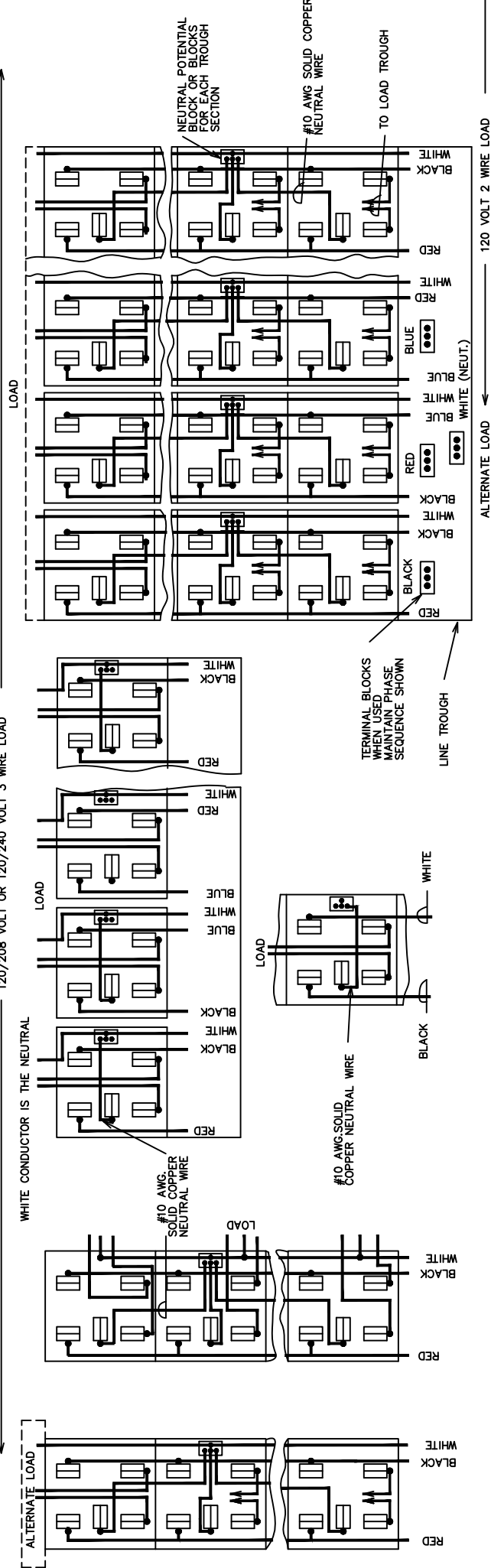
EO-9053-B

REVISIONS		
TLM	02/27/90	12
REDRAWN TO CADAM. W.J.T. 12/16/89 JP		
L.MATONII P.PHILIPPIDIS	9/8/93	13
REMOVE "MAX. WIRE SIZE 3# 2/0 AWG.", ADD "INCLUDING BUS", AND "REQ'D. IF BELOW FLOOR GRADE". V.D. 9/1/93 JP		
V.FERGUSON	3/11/94	14
REMOVED 3'-0" MIN. FROM METER BANK & ADDED NOTE. C.W. 3/11/94		
V.FERGUSON	7/24/03	15
CHANGED MAX. HEIGHT FOR METER SOCKETS. G.D. 7/24/03		
C.MAGOULAS	10/2/09	16
CHANGED DEPARTMENT TO ELECTRIC METER SHOP. G.D. 10/2/09		
A. MILLER		17
REVIEWED DRAWING NO CHANGES MADE ISSUE FOR RECORD N.P. 5/4/16		
A. MILLER		18
REATTACHED SHEET 2 CHANGED LOCATION OF TROUGH FROM FLOOR TO FINISHED GRADE LEVEL. A.M. 6/1/20		

VERTICAL TROUGH TYPE WATTHOUR METER SOCKETS (TABLE 1V A AND 1V B)



WIRING DIAGRAMS



- NOTES:
- ONLY METER SOCKETS LISTED IN TABLES 1V-A, B, C, AND D OF THE BOOKLET "APPROVED ELECTRIC SERVICE EQUIPMENT" ARE TO BE USED.
  - SOCKETS FOR COMMERCIAL CUSTOMERS SHALL NOT BE EQUIPPED WITH 3 WIRE SUPPLY.
  - SOCKETS SHALL BE ON 10" MINIMUM CENTERS BOTH HORIZONTALLY AND VERTICALLY.
  - IF LOAD TROUGH LINE TROUGH, OR END LINE CABINET EXCEEDS 8" IN DEPTH, IT MUST BE SPACED AWAY FROM THE METER SOCKET ROWS BY AT LEAST 6".
  - METER SOCKETS ARE TO BE SET PLUMB AND LEVEL.
  - FOUR WIRE SERVICE SHALL NOT BE RUN THROUGH A ROW OF METER SOCKETS.
  - IF FOUR WIRE SERVICE IS USED, ALL FOUR WIRE SERVICE POSITIONS WITHIN METAL WIRE TROUGH SHALL BE OCCUPIED BY SOCKETS. THE NUMBER OF METERS TO BE INSTALLED IN SUCH TROUGH COVER SHALL BE LOCATED AT THE END POSITION OF A SOCKET TROUGH.
  - A BLANK COVER PLATE (TABLE 111) MUST BE INSTALLED ON EACH METER SOCKET OR SOCKETS SHALL BE OTHERWISE PROTECTED IN AN EQUIVALENT MANNER.
  - MOUNTING DIMENSIONS AND CLEARANCES FOR METER SOCKETS SHALL BE IN ACCORDANCE WITH CON Edison, "ELECTRIC SERVICE RULES".
  - FOR THREE WIRE LOADS AND THREE ROWS OF SOCKETS, THE CONTRACTOR SHALL SHOW HOW THE CONDUCTORS ARE TO BE INSTALLED IN THE SOCKET JAWS EXACTLY AS SHOWN WHEN ADDITIONAL ROWS ARE INSTALLED. THE CONDUCTOR CONNECTED TO THE UPPER LEFT SOCKET JAWS MUST BE AS FOLLOWS:  
RED WHEN RED AND BLACK PHASE CONDUCTORS ARE USED.  
BLACK WHEN BLACK AND BLUE PHASE CONDUCTORS ARE USED AND BLUE WHEN BLUE AND RED PHASE CONDUCTORS ARE USED.  
THE COMPANY WILL CONNECT THE CONTRACTOR'S COLOR CODED SERVICE BLUE LEADS TO BLACK PHASE SERVICE SO THAT BLACK LEADS RED LEADS BLUE LEADS BLACK.
  - WHEN SERVICE IS ALIVE, CORRECTNESS OF CONNECTIONS CAN BE DETERMINED AT THE METER SOCKETS WITH A PHASE SEQUENCE INDICATOR.
  - SEE MES 395 FOR METER SOCKETS ON LINE SIDE OF SERVICE SWITCH.
  - FOR SPACE REQUIREMENTS FOR A BANK OF WATTHOUR METER SOCKETS INSTALLED IN A METER CLOSET—SEE MES 528.

REFERENCE DWG.  
WATTHOUR METER SOCKETS SHEET 2 . . . . . EO-9054-B

WATTHOUR METER SOCKETS ON LOAD SIDE OF SERVICE DISCONNECT.  
(SHEET 1 OF 2)

CONSOLIDATED EDISON COMPANY OF N. Y. INC.  
ELECTRIC METER SHOP

DATE 2/25/59  
LAST REV. 6/1/20

MES 447-A REV. 18

COMPUTER GENERATED DRAWING NOT TO BE HAND REVISED

FOR APPROVAL	DIV	SIGNATURE	DATE	DRAWN BY DATE	CHECKED BY DATE
				J.V. 5/30/85	
				TRACED BY DATE	SCALE NONE
				APPROVED	
				CHIEF DESIGN ENGINEER DATE	
				METER ENGINEER DATE	

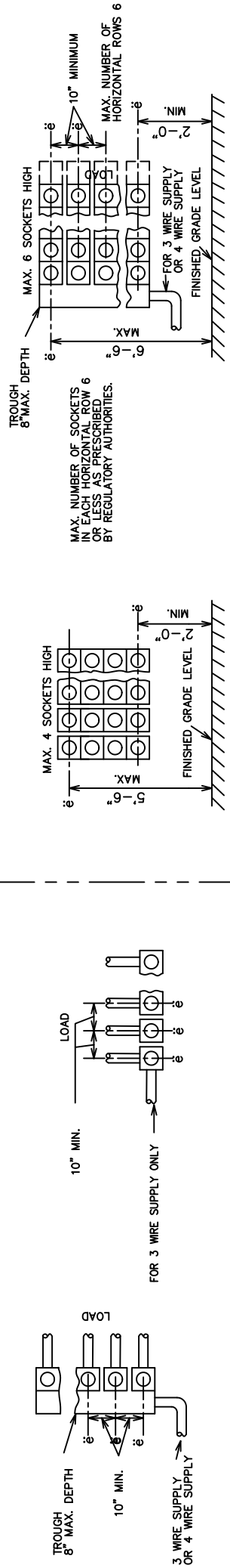
REVISIONS

TLM 02/27/90	12
REDRAWN TO CADAM W.J.T. 1/5/90 JP	
T.L.MATONTI P.PHILIPPIDIS 9/8/93	13
REMOVE "MAX. WIRE SIZE 3#2/0 AWG.", ADD "INCLUDING BUS" AND "REQ'D. IF BELOW FLOOR GRADE" V.D. 9/1/93 JP	
V.FERGUSON 3/11/94	14
REMOVED 3'-0" MIN. FROM METER BANK & ADDED NOTE C.W. 3/11/94	
V.FERGUSON 7/24/03	15
CHANGED MAX. HEIGHT FOR METER SOCKETS. G.D. 7/24/03	
C. MAGOULAS 10/2/09	16
CHANGED DEPARTMENT TO ELECTRIC METER SHOP. G.D. 10/2/09	
A. MILLER	18
REATTACHED SHEET 2 CHANGED LOCATION OF TROUGH FROM FLOOR TO FINISHED GRADE LEVEL A.M. 6/1/20	

MULTIPLE ROW INSTALLATIONS

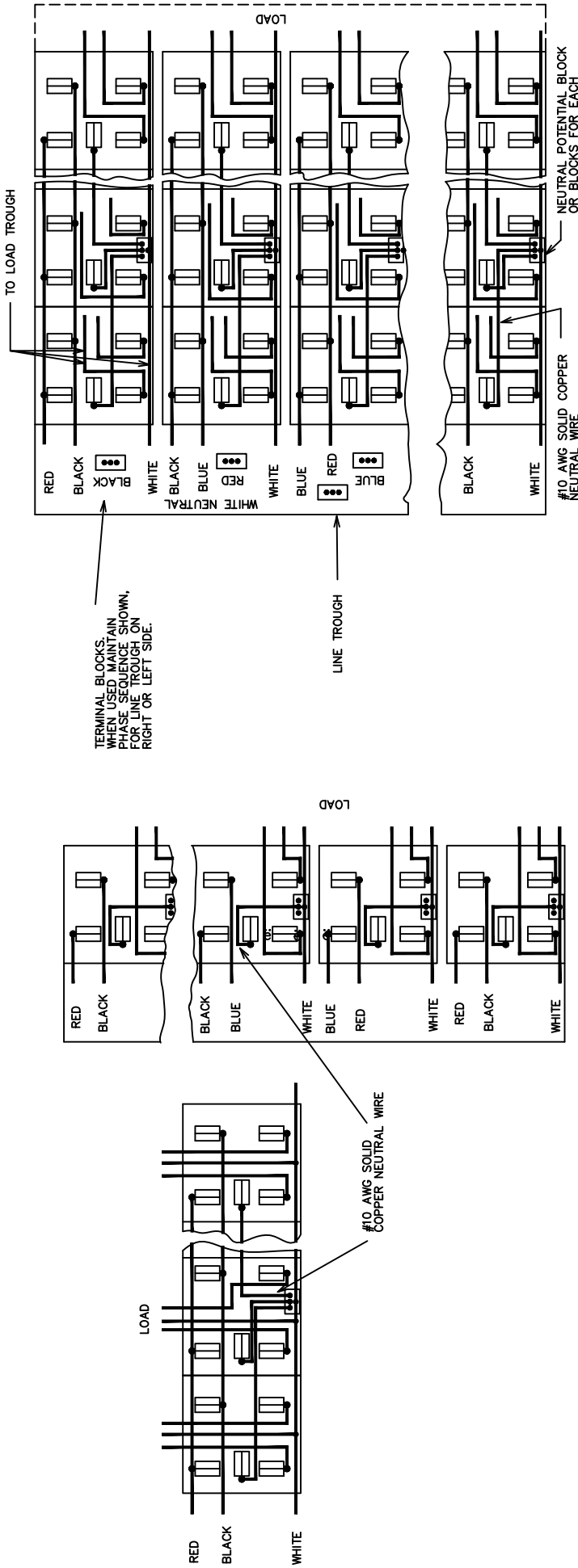
HORIZONTAL TROUGH TYPE WATTHOUR METER SOCKETS (TABLE IV C AND 1V D)

SINGLE ROW INSTALLATIONS



WIRING DIAGRAMS

120/208 VOLT OR 120/240 VOLT 3 WIRE LOAD



120 VOLT 2 WIRE LOAD



REFERENCE DWG.

WATTHOUR METER SOCKETS (SHEET 1) . . . . .EO-9053-B  
 FOR ADDITIONAL NOTES AND INFORMATION, . . . . . SEE SHEET 1  
 REFERENCE TABLES APPLY TO BOOKLET "APPROVED ELECTRIC SERVICE EQUIPMENT"

WATTHOUR METER SOCKETS  
 ON LOAD SIDE OF METER DISCONNECT.  
 (SHEET 2 OF 2)

CONSOLIDATED EDISON COMPANY OF N. Y. INC.  
 ELECTRIC METER SHOP

DATE 2/25/59

LAST REV. 6/1/20

MES 447-A REV.18

SHEET 2  
 SPEC. MES 447-A, REV. 18

FOR APPROVAL	DIV	SIGNATURE	DATE	DRAWN BY J.V. 5/30/85	CHECKED BY DATE
				TRACED BY DATE	SCALE NONE
				APPROVED	
				CHIEF DESIGN ENGINEER DATE	
			METER ENGINEER	DATE	

EO-9054-B