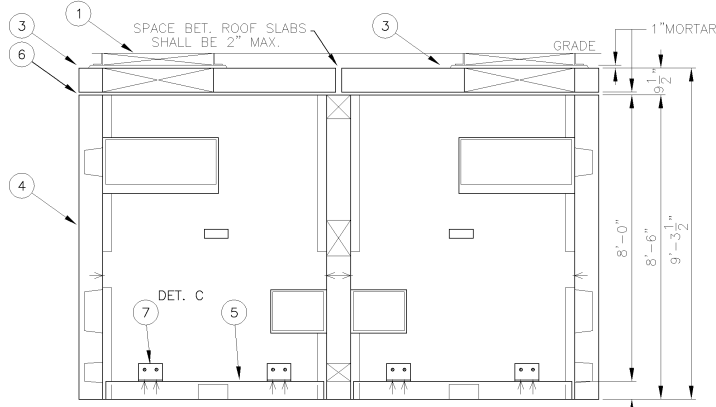
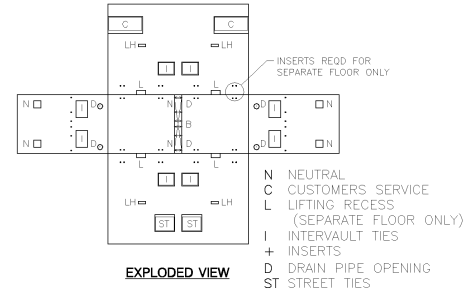
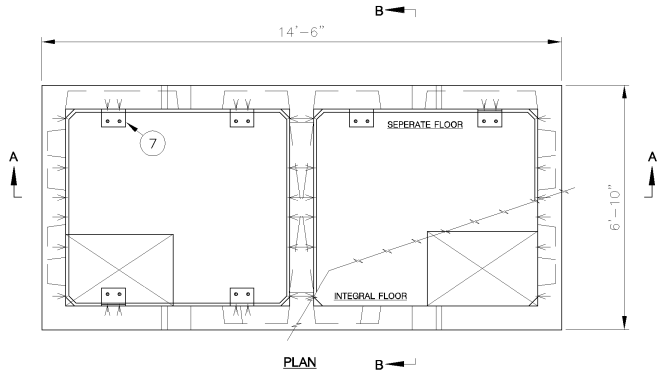
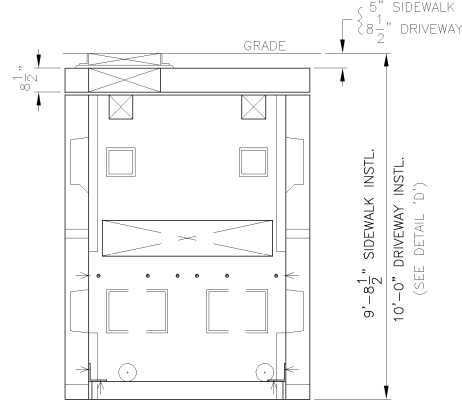


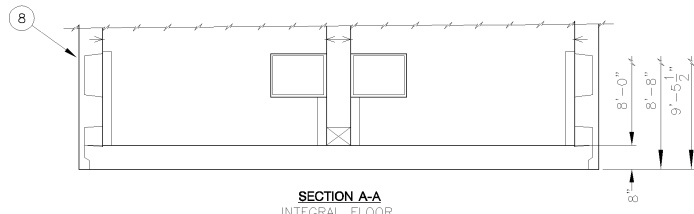
REVISIONS
 LUIS ORTEGA
 5/29/91 3
 REDESIGNED; UPDATED
 FILING INFO. JP
 J.P. 5/29/91
 R.RAEBIGER 04/29/02 4
 THIS DWG. HAS BEEN
 REDRAWN INTO THE
 AUTOCAD SYSTEM
 ADDED INTEGRAL FLOOR
 AR 6/99



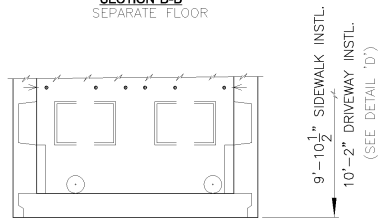
SECTION A-A
SEPERATE FLOOR



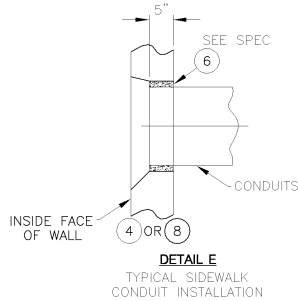
SECTION B-B
SEPERATE FLOOR



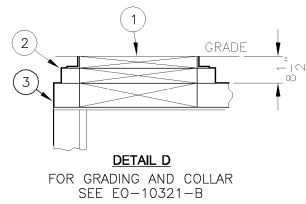
SECTION A-A
INTEGRAL FLOOR



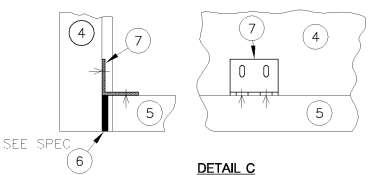
SECTION B-B
INTEGRAL FLOOR



DETAIL E
TYPICAL SIDEWALK
CONDUIT INSTALLATION



DETAIL D
FOR GRADING AND COLLAR
SEE EO-10321-B



DETAIL C
FLOOR ANGLE INSTALLATION
SEPERATE FLOOR

INSTALLATION SPECS:

AFTER INSTALLATION ALL CONDUITS SHALL BE SEALED IN WALLS AS PER SPEC. EO-1100.
 ALL FLOOR JOINTS SHALL BE WATERTIGHT. (INTEGRAL FLOOR ONLY.)
 POSITION ROOF SLAB OPENING SO THAT GRATING WILL BE IN LINE WITH ADJACENT V13-6.
 INSTALL FLOOR USING CEMENT MORTAR TO WHICH INTRAPLAST-N-EXPANDING ADMIXTURE (OR APPROVED EQUAL) HAS BEEN ADDED. SEE DETAIL "C"
 INSTALL ROOF AND GRATING USING CEMENT MORTAR TO WHICH SIKASET LIQUID C ACCELERATOR (OR APPROVED EQUAL) HAS BEEN ADDED.
 INTERVAULT CONDUITS INSTALLED IN END WALLS TO BE CENTRALLY LOCATED AND ENDS FLUSH WITH INSIDE WALLS. GROUT IN PLACE WITH CEMENT MORTAR TO WHICH INTRAPLAST-N-EXPANDING ADMIXTURE (OR APPROVED EQUAL) HAS BEEN ADDED TO REDUCE SHRINKAGE.
 WHERE PRECAST CONDUIT IS USED FOR STREET OR SERVICE TIES INSTALL AS SHOWN IN DETAIL "E".
 AFTER MANHOLE IS INSTALLED FILL ALL UNUSED OPENINGS AND LIFT HOLES WITH CEMENT MORTAR TO WHICH INTRAPLAST-N-EXPANDING ADMIXTURE (OR APPROVED EQUAL) HAS BEEN ADDED.
 COVER ROOF SLAB WITH 2 LAYERS OF ASPHALT ROOFING PAPER (ITEM 2) PRIOR TO THE PLACEMENT OF THE CONCRETE SUB-BASE (SEE DETAIL D) IN ROCK AREA, MANHOLE SHALL BE PLACED ON A 3" CUSHION OF SAND.

REFERENCE DWG.

208 VOLT NETWORK BUS INSTALLATION EO-13898-A

PURPOSE:

TO HOUSE BUS AND CABLE USED IN CONJUNCTION WITH TRANSFORMER INSTALLATIONS.

FIELD MANUALS
 NO. 5: VAULT INSTL.
 SECT. 2: VAULTS, STRUCT.
 NO. 11: SUBWAY CONSTR.
 SECT. 4: TRANSFORMER
 MANHOLES & VAULTS
 NO. 12: SUBWAY CONSTR.
 SECT. 4: TRANSFORMER
 MANHOLES & VAULTS
 NO. 17: SURVEY
 SECT. 3: BOXES,
 MANHOLES & VAULTS
 CONSTRUCTION STD'S
 MANUAL NO. 3
 SECT. 42: VAULTS

ITEM	QUANTITY	DESCRIPTION	DWG. OR SPEC. NO.	STOCK NO.
8	-	1 PRECAST CONCRETE WALLS W/ INTEGRAL FLOOR	314015	XXX-XXXX
7	8	- FLOOR ANGLE, WASHER & SHIM ITEM 2,3& 4	EO-13849-B	-
6	AS REQ'D	AS REQ'D CEMENT MORTAR SEE SPEC.	EO-100,167	000-0208
5	2	- PRECAST CONCRETE FLOOR	EO-13847-B	-
4	1	- PRECAST CONCRETE WALLS	EO-13847-B	-
3	2	- PRECAST CONCRETE ROOF	EO-13850-B	-
2	AS REQ'D	AS REQ'D ASPHALT ROOFING PAPER (30#/100 SQ.FT.)	-	-
1	2	- SIDEWALK GRATING AND FRAME	EO-6660-B	003-1237

BILL OF MATERIAL

DOUBLE BUS VAULT TYPE BV 13-2 WITH SEPERATE AND INTEGRAL FLOOR INSTALLATION
13'-2"x 5'-6"x 8'-0" HR
 CONSOLIDATED EDISON COMPANY OF N.Y., INC.
 DISTRIBUTION ENGINEERING DEPT