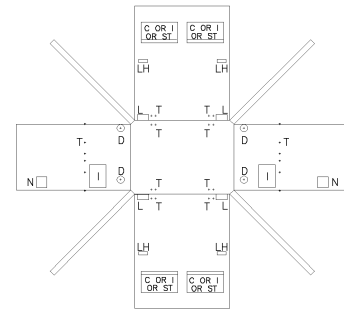
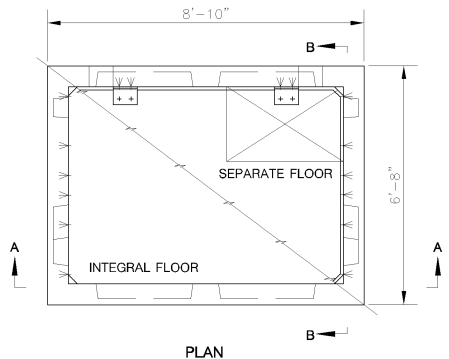


REVISIONS

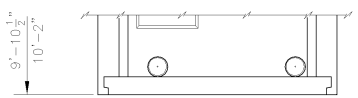
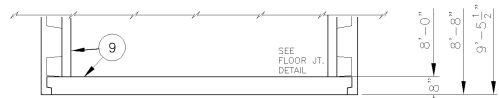
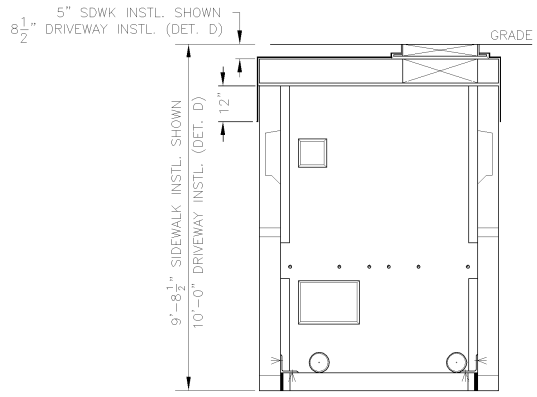
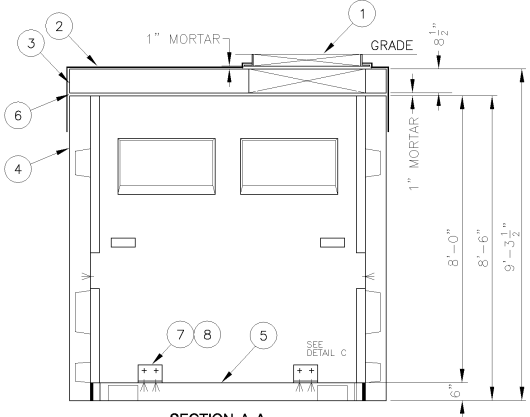
LUIS ORTEGA 12/20/90	6
REDESIGNED AND UPDATED FILING INFO.	
J.P. 12/90 AR 12/90 JM 12/20/90	JP
R.RAEBIGER 04/29/02	7

THIS DWG. HAS BEEN
REDRAWN INTO THE
AUTOCAD SYSTEM
CHANGED ORIENTATION
OF ROOF OPENING.
ADDED 'INSTL. GUIDE'
TO REFERENCE DWGS.
ADDED INTEGRAL FLOOR
& JT. DETAIL
AR 6/99



LEGEND

N NEUTRAL
C CUSTOMERS SERVICE
L LIFTING RECESS
I *(SEPARATE FLOOR ONLY)
T INTERVAULT TIES
D DRAIN PIPE OPENING
ST STREET TIES
LH LIFTING HOLES



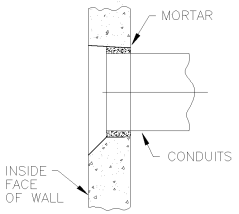
SECTION A-A
(SEPARATE FLOOR)

SECTION B-B
(SEPARATE FLOOR)

PARTIAL SECTION A-A
(INTEGRAL FLOOR)

PARTIAL SECTION B-B
(INTEGRAL FLOOR)

NOTE
THE ITEMS ON THIS DRAWING ARE NOT COMPATIBLE
WITH THE WEDGE INSTL. ON THE PREVIOUS REVISIONS.



APPROXIMATE WEIGHTS

WALLS	20250 LBS±
FLOOR	3000 LBS±
ROOF	5250 LBS
WALLS w/ INTEGRAL FLOOR	24800 LBS±
GRATING & DOOR	299 LBS±

SPECIFICATIONS:

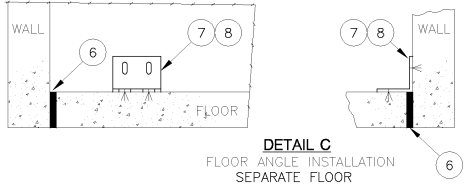
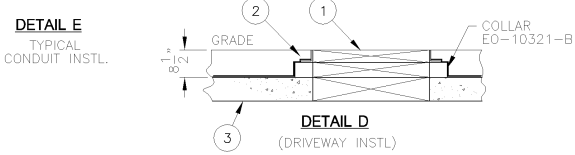
AFTER INSTALLATION, ALL OCCUPIED CONDUITS SHALL BE SEALED AS PER SPEC. EO-1100.
ALL JOINTS SHALL BE WATERTIGHT.
POSITION ROOF SLAB OPENING SO THAT GRATING WILL BE IN LINE WITH ADJACENT V 13-6.
INSTALL FLOOR USING CEMENT MORTAR MIXED WITH INTRAPLAST-N-EXPANDING ADMIXTURE.
INSTALL ROOF AND GRATING USING CEMENT MORTAR MIXED WITH SIKASET LIQUID C ACCELERATOR.
INTERVAULT CONDUITS INSTALLED IN END WALLS TO BE CENTRALLY LOCATED AND ENDS FLUSH WITH INSIDE WALLS. GROUT IN PLACE WITH CEMENT MORTAR MIXED WITH INTRAPLAST-N-EXPANDING ADMIXTURE TO REDUCE SHRINKAGE. WHERE PRECAST CONDUIT IS USED FOR STREET OR SERVICE TIES, INSTALL AS SHOWN IN DETAIL.
AFTER MANHOLE IS INSTALLED, FILL ALL UNUSED OPENINGS AND LIFT HOLES WITH CEMENT MORTAR MIXED WITH INTRAPLAST-N-EXPANDING ADMIXTURE. COVER ROOF SLAB WITH 2 LAYERS OF TAR PAPER, ITEM 2, PRIOR TO THE PLACEMENT OF THE CONCRETE SUB-BASE.

REFERENCE DWGS:

PRECAST ROOF	EO-13074-B
PREFAB. REINF. (SEPARATE FLOOR INSTL.)	EO-13072-B
PREFAB. REINF. (INTEGRAL FLOOR INSTL.)	313396
PRECAST CONCRETE	EO-13071-B
INSTL EQUIP GUIDE (V 13-6) DWG.	EO-13112-B
MULTIPLE V 13-6 & BV 7-8 GUIDE DWG.	EO-13124-B

PURPOSE:

THIS VAULT IS INTENDED TO HOUSE ELECTRICAL BUS AND CABLES USED IN CONJUNCTION WITH TRANSFORMER INSTALLATIONS.



FIELD MANUALS
NO. 5: VAULT INSTL
SECT. 2: VAULTS, PRECAST
NO. 11: SUBWAY CONSTR.
SECT. 4: VAULTS, BUS
NO. 17: SURVEY
SECT. 3: VAULTS, BUS
CONSTRUCTION STDS
MANUAL NO. 3
SECT. 42: VAULTS

ITEM NO.	SEPARATE FLOOR/INTEGRAL FLOOR QUANTITY	DESCRIPTION	DWG. OR SPEC. NO.	STOCK NO.
9	-	1 PRECAST CONCRETE WALL w/INTEGRAL FLOOR	ITEM 8	EO-13071-B 002-5247
8	AS REQD	- WASHERS, SHIMS & HDWARE	ITEM 3 & 4	EO-13072-B -
7	4	- FLOOR ANGLE	ITEM 2	EO-13072-B -
6	AS REQ'D/AS REQ'D	- CEMENT MORTAR	SEE SPECS.	EO-100,167 000-0208
5	1	- PRECAST CONCRETE FLOOR	ITEM 2	EO-13071-B 002-4885
4	1	- PRECAST CONCRETE WALLS	ITEM 1	EO-13071-B 002-4877
3	1	1 PRECAST CONCRETE ROOF		EO-13074-B 002-4869
2	AS REQD AS REQD	- TAR PAPER (30# / 100 SQ.FT.)		- -
1	1	1 SIDEWALK GRATING AND FRAME		EO-6660-B 003-1237

BILL OF MATERIAL

**VAULT TYPE BV 7-8
INSTALLATION
7'-8" x 5'-6" x 8'-0"**

CONSOLIDATED EDISON COMPANY OF N.Y., INC.
DISTRIBUTION ENGINEERING DEPT

DATE	DWG. NO. EO-13073-B	REV. 7
LAST REV.	6/99	