

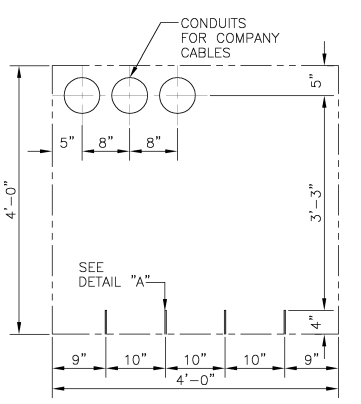
Robert Gentile
08.23.06

REVISIONS

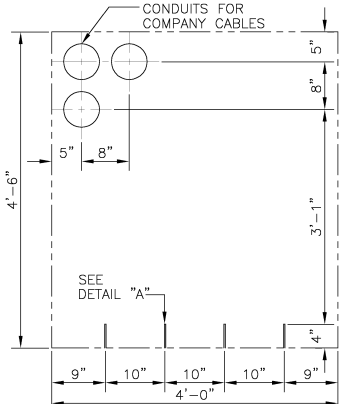
Robert Gentile
04.03.07

1
ADDED 600 KCMIL
BACK TO THE
RECOMMENDED
STANDARD CABLE
SIZE TABLE.

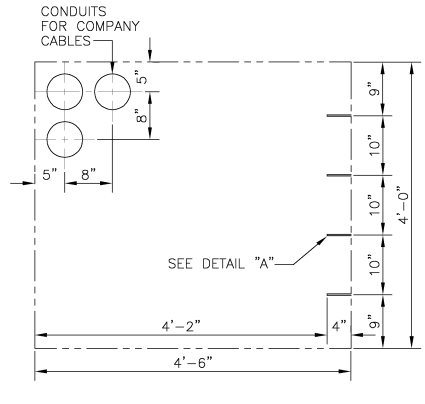
JDV 04.03.07



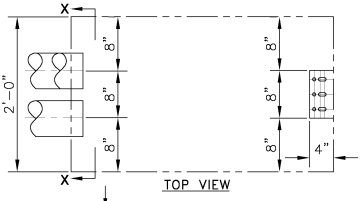
**FRONT VIEW
ARRANGEMENT NO. 1**
4'-0" HIGH x 4'-0" WIDE x 2'-0" DEEP SPACE
COMPANY CABLES AT REAR
CUSTOMER TERMINALS AT BOTTOM



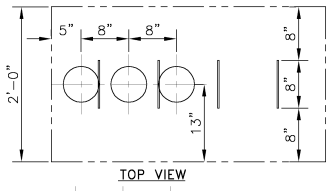
**FRONT VIEW
ARRANGEMENT NO. 2**
4'-6" HIGH x 4'-0" WIDE x 2'-0" DEEP SPACE
COMPANY CABLES AT REAR
CUSTOMER TERMINALS AT BOTTOM



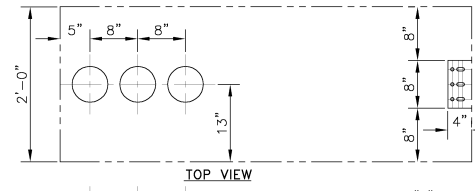
**FRONT VIEW
ARRANGEMENT NO. 3**
4'-0" HIGH x 4'-6" WIDE x 2'-0" DEEP SPACE
COMPANY CABLES AT REAR
CUSTOMER TERMINALS AT SIDE



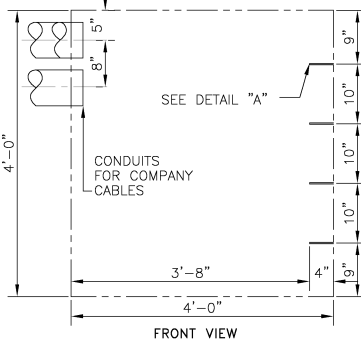
TOP VIEW



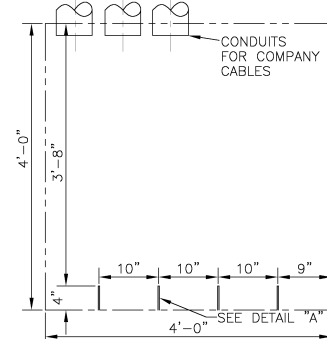
TOP VIEW



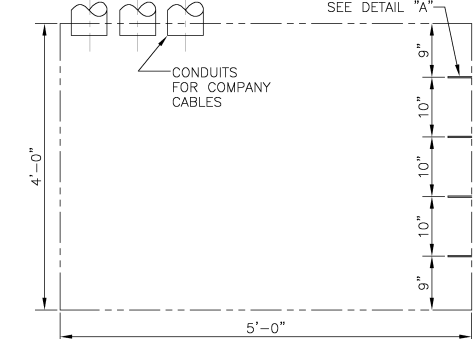
TOP VIEW



**FRONT VIEW
ARRANGEMENT NO. 4**
4'-0" HIGH x 4'-0" WIDE x 2'-0" DEEP SPACE
COMPANY CABLES AT SIDE
CUSTOMER TERMINALS AT SIDE



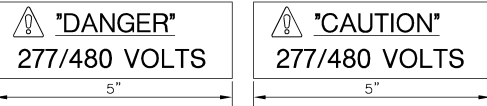
**FRONT VIEW
ARRANGEMENT NO. 5**
4'-0" HIGH x 4'-0" WIDE x 2'-0" DEEP SPACE
COMPANY CABLES AT TOP
CUSTOMER TERMINALS AT BOTTOM



**FRONT VIEW
ARRANGEMENT NO. 6**
4'-0" HIGH x 5'-0" WIDE x 2'-0" DEEP SPACE
COMPANY CABLES AT TOP
CUSTOMER TERMINALS AT SIDE

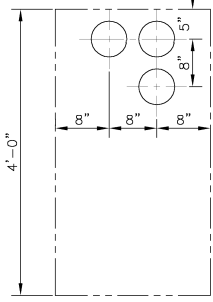
RECOMMENDED STANDARD CABLE SIZES:

COPPER - #6, #2, 2/0, 4/0, 500 KCMIL: CON EDISON
#6, #2, 2/0, 4/0, 500 KCMIL, 600 KCMIL: CUSTOMER ONLY
ALUMINUM - #4, 1/0, 4/0, 350 KCMIL, 2-350 KCMIL,
750 KCMIL, 900 KCMIL: CUSTOMER ONLY

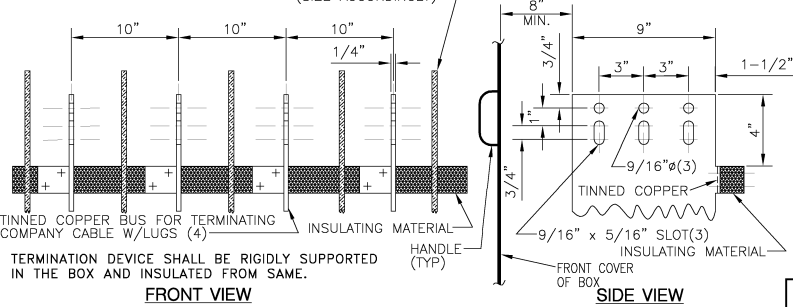


SIGNAGES

(SEE NOTES #6 AND #7)



SECTION X-X 1/4" INSULATED PLASTIC BARRIER (SIZE ACCORDINGLY)



DETAIL "A" - CUSTOMER'S TERMINATING DEVICE
4" LENGTH IS REQUIRED FOR CONNECTION OF LUGS.

REF. DWGS:

CUSTOMER'S ELECTRIC SERVICE FROM STREET CABLE SYSTEM:

BUILDINGS WITH BASEMENTS AT PROPERTY LINE.....	EO-6208-D
BUILDINGS WITH BASEMENTS BACK OF PROPERTY LINE.....	EO-6209-D
BUILDINGS WITHOUT BASEMENTS AT PROPERTY LINE.....	EO-6211-D
BUILDINGS WITHOUT BASEMENTS BACK OF PROPERTY LINE.....	EO-6212-D
BUILDINGS WITH SUITABLE SUB-SIDEWALK SPACE OUTSIDE OF PROPERTY LINE.....	EO-6214-D
FOR 120/208V SPACE REQUIREMENTS - MAX. 3-500KCMIL COPPER CON EDISON CABLES PER PHASE....	EO-9073-B
SPACE REQUIREMENTS - MAX. 1-500KCMIL COPPER CON EDISON CABLES PER PHASE....	348209-0
SPACE REQUIREMENTS - MAX. 2-500KCMIL COPPER CON EDISON CABLES PER PHASE....	348210-0

NOTES:

- THE RECOMMENDED TYPE OF CONNECTORS AND METHOD OF CONNECTION ARE GIVEN IN SPEC. EO-5403.
- THE CUSTOMER SHALL PROVIDE AND CONNECT HIS SERVICE CABLES TO A SUITABLE COPPER TERMINATING DEVICE SECURED TO BOX, UNDER ANY OF THE FOLLOWING CONDITIONS:
A) WHEN COPPER OR ALUMINUM CABLES OTHER THAN THOSE LISTED UNDER RECOMMENDED STANDARDS ARE USED.
B) WHEN THERE WILL BE 3 OR MORE SETS OF CUSTOMER CABLES INTO OR OUT OF THE SERVICE END BOX.
- THESE ARE MINIMUM REQUIREMENTS FOR CONNECTION OF THE COMPANY'S CABLES AND DO NOT COVER REQUIREMENTS FOR CUSTOMER'S CABLES.
- NO CUSTOMER CABLES SHALL OCCUPY SPACE IN AREA SHOWN INSIDE END BOXES.
- A BOX ENCLOSING THE REQUIRED SPACE SHALL CONFORM TO THE FOLLOWING:
A) BOX SHALL BE IDENTIFIED BY THE MANUFACTURER'S NAME.
B) BOX SHALL BE MADE OF GALVANIZED SHEET STEEL AND HAVE A FINISH OF GRAY ENAMEL.
C) THE GAUGE OF THE STEEL SHALL CONFORM WITH THE REQUIREMENTS OF THE UNDERWRITERS LABORATORIES INC.
D) ALL REMOVABLE BOX COVERS SHALL BE SEALABLE AND BE EQUIPPED WITH TWO HANDLES PER COVER.
E) THE CUSTOMER SHALL SUBMIT FOR COMPANY APPROVAL ANY PROPOSED CHANGE IN DESIGN OF BOXES INDICATED ON THIS DRAWING.
- "DANGER 277/480 VOLTS" - RED LABEL WITH WHITE LETTERING AND EXCLAMATORY ALERT SYMBOL LOCATED ON THE INSIDE BACK SURFACE OF THE ENCLOSURE.
- "CAUTION 277/480 VOLTS" - YELLOW LABEL BLACK LETTERING AND EXCLAMATORY ALERT SYMBOL LOCATED ON THE OUTSIDE COVER OF THE ENCLOSURE.

**CUSTOMER'S 265/460 VOLT ELECTRIC SERVICE
SPACE REQUIREMENTS FOR COMPANY CABLES
IN SERVICE END BOXES, MAX. 3-500 KCMIL COPPER
CON EDISON CABLE PER PHASE**

CONSOLIDATED EDISON COMPANY OF N.Y., INC.
DISTRIBUTION ENGINEERING DEPT.

DATE 07.22.05 DWG. NO. 348211 REV. 1
LAST REV. 04.03.07

FIELD MANUAL
NO. 4: SERV. INSTL.
SECT. 1: SERV.
UNDERGROUND
NO. 16: SERV.
INSP. & CTRL.
SECT. 4: ELECT. SERV.

CONSTRUCTION STDS
MANUAL NO. 3
SECT. 36:
SERVICES UNDERGROUND

DESIGNED BY 07.22.05	CHECKED BY	DATE
DRAWING CODE	SCALE	N.T.S.
DATE 08.23.06	DATE	